

Media Histories

Resource Guide To New Orleans



COMM 328

*Dr. Vicki Mayer
Carolyn Heneghan*

Table of Contents

Research Site Information

New Orleans Public Library	3
Hogan Jazz Library.....	4
Manuscripts Department.....	5
Louisiana Collection.....	6
Amistad Research Center	6
Historic New Orleans Collection	7

Chapter Resources

Advertisements.....	10
Celebrities.....	11
Music.....	12
Newspapers.....	15
Theatre.....	17
Books.....	19
Radio.....	21
Television.....	21

Other Resources

Street Name Changes.....	22
Research Guidelines.....	24
Getting Started.....	24
How to work with Special Collections Materials.....	25
Photocopying Policy.....	26
Photography Policy.....	28
Helpful Links.....	29

New Orleans Public Library – City Archives

NOPL

219 Loyola Ave

504.596.2560

Mon–Thurs – 10 a.m. – 6 p.m.

Fri–Sat – 10 a.m. – 5 p.m.

<http://nutrias.org/>

Irene Wainwright

504.596.2610

iwainwri@gno.lib.la.us

Driving Directions:

- 1) Take S. Carrollton Ave. towards and just past I10.
- 2) Turn right onto Tulane Ave/US-61. (~2 miles)
- 3) Turn right onto Loyola Ave. (~2 miles) End 219 Loyola Ave.

Bus Route:

- 1) Take the S. Claiborne bus (16) going downtown. Get off at Loyola Ave.
- 2) Transfer to M.L. King bus (28), which will run up Loyola. Get off at Tulane Ave. End 219 Loyola Ave.

Hogan Jazz Library

HJL

Special Collections, Jones Hall – 3rd floor

504.865.5688

Mon–Fri – 9 a.m. – 4:45 p.m.

Sat – 9 a.m. – 11 a.m.

<http://specialcollections.tulane.edu>

Bruce Boyd Raeburn

504.865.5688

raeburn@tulane.edu

Lynn Abbott

504.865.5688

labbott1@tulane.edu

Tulane University Manuscripts Department

MD

Special Collections, Jones Hall – floor

504.865.5688

Mon–Thurs – 9 a.m. – 6 p.m.

Fri – 9 a.m. – 5 p.m.

Sat – 9 a.m. – 1 p.m.

<http://specialcollections.tulane.edu>

Leon C. Miller

504.865.5685

lmiller@tulane.edu

[Mary LeBlanc](#)

504.865.5685

mleblan1@tulane.edu

[Melissa Smith](#)

504.247.1833

msmith1@tulane.edu

Louisiana Collection

LAC

Special Collections, Jones Hall – 2nd floor

504.865.5688

Mon–Thurs – 9 a.m. – 6 p.m.

Fri – 9 a.m. – 5 p.m.

Sat – 10 a.m. – 1 p.m.

<http://specialcollections.tulane.edu/LaCollection.html>

Kenneth Owen

504-865-5685

862-8000 x1834

kowen@tulane.edu

Amistad Research Center

ARC

Tilton Hall

(504) 862-3222

Mon–Fri – 8:30 a.m. – 4:30 p.m.

www.arc.tulane.edu

Brenda Square

square@tulane.edu

Historic New Orleans Collection

HNOC

Williams Research Center

410 Chartres St, b/t Conti & St. Louis

504.598.7171

Tue-Sat - 9:30 a.m. - 4:30 p.m.

<http://www.hnoc.org/collections/research-center.php>

wrc@hnoc.org

The Historic New Orleans Collection

533 Royal St.

504.523.4662

Tue-Sat - 9:30 a.m. - 4:30 p.m.

<http://www.hnoc.org/>

Driving Directions:

- 1) Take S. Carrollton towards the interstate and merge onto I-10 E toward Slidell. (~2.5 miles)
- 2) Take the Vieux Carre exit (235A) and merge onto Orleans Ave, which soon becomes Basin St.
- 3) Turn left onto Conti St.
- 4) Turn left onto Chartres St. End at 410 Chartres St.

Streetcar Route:

- 1) Take the St. Charles streetcar downtown until the end of the line. You will be dropped off at St. Charles and Canal.
- 2) Walk one block towards the river to Camp St. On the other side of Canal St., the street names change, and Camp St. will become Chartres.
- 3) Take a left onto Chartres into the French Quarter. 410 Chartres is about three blocks up, between Conti and St. Louis.

Bus Route

- 1) Take the S. Claiborne bus (16) going downtown.
- 2) Get off near the corner of Canal and Camp (near the end of the route). On the other side of Canal St., the street names change, and Camp St. will become Chartres.
- 3) Take a left onto Chartres into the French Quarter. 410 Chartres is about three blocks up, between Conti and St. Louis.

To get from the Research Center to the other HNOC site:

- 1) Walk up Chartres to St. Louis (facing away from Canal St.). ~1 block
- 2) Take a left onto St. Louis. ~1 block
- 3) Take a right onto Royal. End at 533 Royal St.

Advertisements

HJL

- Vertical files: Women in Music (general), 1912–present; local, 1954–present
 - pamphlets, catalogues, ads and other printed material related to individual females artists and women’s musical groups from a variety of genres



MD

- Simon Family papers (MC 708), 1840–1960
 - ads for the “Suburban Gardens” nightclub

LAC

- Louisiana Vertical File Collection
 - significant holdings of menus and advertising

flyers, cards, etc. for more than 150 restaurants and coffee houses in NO, especially French Quarter establishments

- preserve brochures and flyers for over 60 NO hotels
- preserve brochures, pamphlets, flyers and programs for cooking organizations and clubs, food businesses, and grocery stores

Celebrities

HJL

- Vertical files: Women in Music (general), 1912–present; (local), 1954–present
 - various printed material related to individual females artists and women’s musical groups from a variety of genres
- Vertical files: Persons – miscellaneous
 - biographies, oral histories, photos, video footage



MD

- Theater Scrapbook (MC B 291), 1900–1901
 - clippings about actors and singers who performed with stock companies in NO, particularly the Baldwin–Melville Company, Grand Opera, Metropolitan English Opera, and Olympia Opera Company

Music

HJL

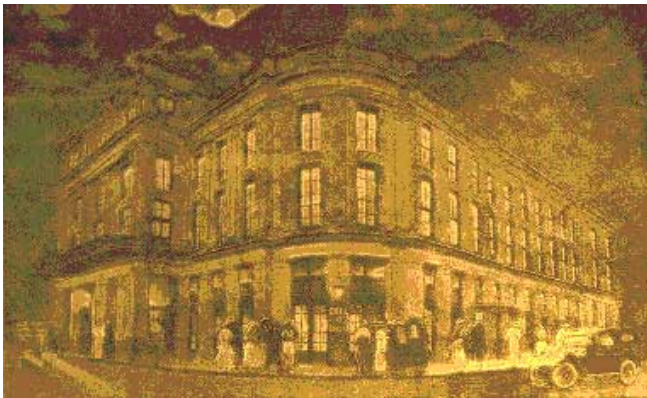
- Vertical files: Women in Music (general), 1912–present; (local), 1954–present
 - various printed material related to individual females artists and women’s musical groups from a variety of genres
- Vertical files: Persons – miscellaneous
 - music recordings (phonograph, tape reels, recording discs, compact discs, video footage, etc.), music criticism, bios of singers, songwriters, musicians and other people of importance to jazz history



MD

- Musica da Camera records (MC 836), 1966–1991
 - programs, newsletters and other records of a NO early-music ensemble spec. in performing music of Medieval and Early Baroque periods

- Eleanor P. Thompson collection (MC 61), 1876–1917
 - NO concert programs and sheet music
- Henry P. Wehrmann collection (MC 873), 1868–1951
 - notes on NO opera, manuscript sheet music, programs
- Albert L. Voss collection (MC 856), 1843–1990
 - programs, clippings, photos, correspondence pertaining to NO musical performance



- Leon R. Maxwell collection (MC 62), 1870–1957
 - concert programs, scrapbooks primarily pertaining to NO music and Newcomb College
- Simon Family papers (MC 708), 1840–1960
 - clippings, receipts, and ads for the “Suburban Gardens” nightclub
- Giuseppe Ferrata (MC 773), 1884–1925
 - personal and professional correspondence of Ferrata, who founded Newcomb’s Piano Dept, some music programs and original manuscripts
- Theater Scrapbook (MC 816), 1902–1916

- programs and clippings on operas and musical recitals from various NO theaters, especially the Crescent Theater, French Opera House, Athenaeum, Tulane Theater, Dauphine Theater, Greenwall Theater, and the Lafayette Theater

NOPL

- Early Sheet Music Collection
 - Online index of loose items:
<http://nutrias.org/~nopl/spec/sheetmusicindex.htm>
 - Bound collection – search library’s automated catalog
- Early Recording Collection
 - Inventory List:
<http://nutrias.org/~nopl/spec/jazzrec.htm>
- Newspaper Collection, 1787–1974
 - news clippings concerning NO music

HNOC

- William Russell Jazz Collection (MSS 500), 1830–1992, bulk 1930–1950
 - collection of jazz memorabilia including musical instruments, records, piano rolls, sheet music, photographs, books and periodicals
 - Encompasses notes from Mr. Russell’s research, audiotapes, programs, posters, correspondence, films, business cards, notes, clippings, and scrapbooks

Newspapers

HJL

- Vertical files: Women in Music (general), 1912–present; (local), 1954–present
 - news clippings, reviews, scholarly articles and other printed material related to individual females artists and women’s musical groups from a variety of genres
- Vertical files: Persons – miscellaneous
 - news clippings, pamphlets, catalogues, reviews, press releases, articles, music criticism

MD

- LaFargue Family papers (MC 923), 1813–1917, bulk--1813–1870s
 - papers of distinguished French LA family, specifically contributions to journalism
- collections of local journalists
 - Ex: Thomas Ewing Dabney (1929–1975), Charles L. Dufour (1955–1962), John S. Kendall (1927–1959), Frederick Cable Oescher (1918–1970), Natalie V. Scott (1902–1959)
- collections of local cartoonists
 - Ex: John Chase (1929–1975), Keith Temple (1923–1966), Trist Wood (1869–1953)
- Leon R. Maxwell collection (MC 62), 1870–1957
 - magazines, scrapbooks, primarily pertaining to NO music and Newcomb College

- Deutsch, Hermann Bacher (MC 130), 1827–1970, bulk 1920–1970
 - NO author and journalist, includes articles for NO Item, NO States, his research material and biographical material
- Hudson, Ethel, 1908–1922
 - LA artist, journalist and suffragist
- Martinez, Raymond J. Papers (MC 103), 1928–1958
 - served as business manager for *Arts and Antiques* and *Arts, Industries and Southern Opinion* magazines

LAC

- New Orleans Media Directories (P88.8 .L68 – all booklets)
 - 197?, July 1974, Dec. 1984, April 1986, April 1987
 - listings for city newspapers and college newspapers, addresses

NOPL

- Newspaper Collection, 1787–1974
 - holdings by year, *huge*, comprehensive collection
- Local Serials in the LA Division
 - List of periodicals:
<http://nutrias.org/~nopl/info/louinfo/serials.htm>

Theatre

MD

- Henry P. Wehrmann collection (MC 873), 1868–1951
 - notes on NO theater and opera, programs, photos, scrapbooks
- Albert L. Voss collection (MC 856), 1843–1990
 - programs, cast lists, clippings, photos and correspondence pertaining to NO theatrical performances
- William P. and Alger Lancaster papers (MC 767), 1892–1965
 - business and personal papers of Alger, manager of “Lasses” White Minstrels and of several theaters in NO, includes theatrical promotional material
- Albert Valentine Veazie (MC 840), 1897–1913
 - actor and stage manager NO, includes programs, clippings, photos



- Rogers Family papers (MC 725), 1831–1939, bulk 1908–1911
 - collection of 19th century playbills
- Theater Scrapbook (MC 816), 1902–1916
 - programs and clippings on operas and musical recitals from various theaters in NO, especially the Crescent Theater, French Opera House, Athenaeum, Tulane Theater, Dauphine Theater, Greenwall Theater, and the Lafayette Theater
- Theater Scrapbook (MC 840), 1905–1908
 - clippings and playbills concerning theatrical productions in NO, particularly at the Tulane Theater
- Theater Scrapbook (MC B 291), 1900–1901
 - clippings about actors and singers who performed with stock companies in NO, particularly the Baldwin–Melville Company, Grand Opera, Metropolitan English Opera, and Olympia Opera Company

NOPL

- Newspaper Collection, 1787–1974
 - news clippings concerning NO theater, opera, etc, including theater openings, show announcements, ownership changes, and so forth

Books

MD

- Augustin, Wogan, Labranche Family Papers (MC 223), 1803–1969, bulk 1842–1936
 - a section is devoted to the writings of LA author Jeanne Wogan Arguedas, who wrote Creole poems, stories and songs under the pen name, Anne Labranche
- Bengston, Jeanne des Dunes (MC 144), 1954–1992
 - correspondence, articles, and poetry of a NO native and Newcomb College grad who wrote largely for the Christian Science Publishing Society and the United Methodist Publishers
- Bradford, Roark (MC 20), 1930–1949
 - letters, papers, clippings and notes of NO author specializing in African–American folk dialect



- Cable, George Washington (MC 2), 1871–1947
 - letters, diaries, manuscripts, notebooks, photos, and other printed material pertaining to Cable’s career, public works, and personal life
- Faulkner, William (1926–1951)
 - MS author
- Harrison, James Albert – Binford, Elizabeth Harrison Papers, 1917–1918
 - writings of Binford, journalist and writer of children’s stories
- Saxon, Lyle (1879–1946)
 - LA poet
- Stuart, Ruth McEnery (MC 139), 1856–1917
 - letters to George W. Cable, and to family and friends, notes and memorandums, programs of readings from her works, press notices, clippings
- Toole, John Kennedy (MC 740), 1930–1989
 - correspondence, literary manuscripts, photos, scrapbooks and family papers
- Townsend, Mary Ashley, 1850–1911
 - LA author

Radio



LAC

- New Orleans Media Directories (P88.8 .L68 – all booklets)
 - 197?, July 1974, Dec. 1984, April 1986, April 1987
 - listings for city radio stations and college radio (except '7?)

NOPL

- Newspaper Collection, 1787–1974
 - news clippings concerning radio in NO

Television

LAC

- New Orleans Media Directories (P88.8 .L68 – all booklets)
 - 197?, July 1974, Dec. 1984, April 1986, April 1987
 - listings for city TV stations (except '7?) and college (except '?? & 74)



NOPL

- Newspaper Collection, 1787–1974
 - news clippings concerning TV in NO

Street Name Changes

NOPL

Alphabetical Index of Changes in Street Names, Old and New
(1852–present)

Complete List:

<http://nutrias.org/~nopl/facts/streetnames/namesa.htm>

Baronne St – Bacchus St (1852)

Bourbon St – Bagatelle St (1852)

Royal St – Casa Calvo St (1852)

St. Claude Ave – Good Children St
(1852)

Dauphine St – Greatmen St (1852)

Calliope St – Louisa and Duplantier Sts
(1852)

Burgundy St– Craps St (1852)

Chartres St – Conde St (1852)

N Rampart St – Love St (1852)

S Rampart St – Circus St (1852)



Coliseum St – Elizabeth St (1852)

Decatur St – Old Levee and Victory Sts (1852), Diana (1894)

Prytania St – Cortland St (1880)

Annunciation St – Jersey St (1887)

Calhoun St – Edmond St (1894)

Diamond St. S/N – South/North Market Sts (1894)

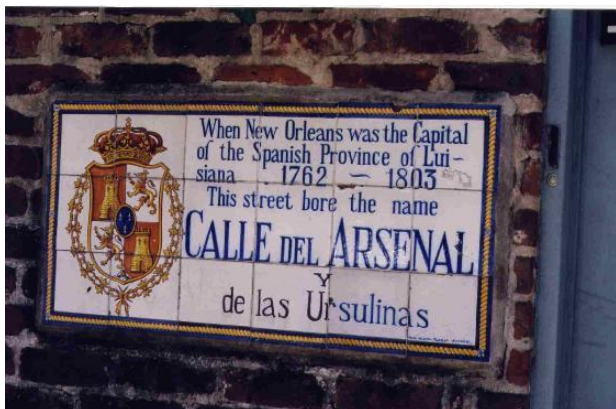
Freret St – Elm St (1894)

Gov. Nicholls St – Hospital St (1894)

Willow St – Eagle St (1895)

Iberville St – Customhouse St (1911)

Loyola Ave – Franklin St S (1924)



Research Guidelines

From Tulane Special Collections website, but generally applicable to all research sites. ****Please read carefully**** before you begin and follow **all** instructions.

Getting Started

- Please sign our daily patron register each day upon first entering the reading room.
- Leave a photo-identification at our reference desk. Do not forget to retrieve your identification when you leave. We are not responsible for identification left in our department.
- To view books or documents, simply complete a request slip and present it to our Reading Room Supervisor. We will bring your items to you and give you a brief demonstration on how properly to handle our materials.
- You may use our holdings only in our reading room. Nothing may be checked out or removed from the room.
- Leave book bags, briefcases, large purses, heavy coats, umbrellas, etc., on the shelves at the front of the reading room under the card catalog. You may take to your desk only pencils (*please, no pens*), blank sheets of paper, note cards, or writing tablets, which must be submitted for

examination upon leaving. We are not responsible for personal belongings left in our reading room.

- The Reading Room Supervisor will give fifteen minutes notice before closing. We will neither retrieve nor photocopy documents after that time.

How to work with Special Collections materials

- **Please sit facing the front of the room.** If two persons are sharing a desk, both should sit on the same side and face the front.
- Please make sure that the reading room supervisor has an unobstructed view of your desk. **Do not place boxes or other items on your desk so that they block the supervisor's view of your work.**
- **Please observe a "one box, one folder" rule.** That is, have only one box at a time open on your table and only one file folder out of that box.
- **Keep documents flat on the table.** When reading documents, leave them flat on the table, in their file folders, and in the order in which you found them. Do not hold documents while reading them, remove them from their file folders, or change the order of documents within the file folders. **Please be particularly careful not to lean on, write on, or place any objects, such as writing paper or note cards, on top of the documents.**

Photocopying Policy

The damage from photocopying is cumulative and irreversible.

All photocopying damages documents two ways: chemically and physically.

1. Chemically, because the heat and light produced by the photocopy machine act as chemical catalysts to increase the rate of the paper's deterioration.
2. Physically, through the extra handling of the document required to make the copy.

Both of these are significant preservation concerns. Because of this, photocopying special collections materials is never routine, but should instead be reserved for special situations.

- **Many items cannot be photocopied because of their fragility or legal restrictions.** Therefore, please obtain permission for photocopies in advance from the reading room supervisor.
- For most photocopy requests you will need to complete an Application for Reprographic Services.
- If your application is approved, you may photocopy Louisiana Collection items that are in good condition

yourself at our self-service photocopier machine near the front of our reading room. **Louisiana Collection items in good condition are the only items you may photocopy yourself.**

- Fragile Louisiana Collection items and materials from other departments (manuscripts, university archives, and rare books) must be photocopied by departmental staff for you. There is no self-service photocopying for manuscript, archival or rare book items.
- **The total number of copies you may receive is limited.** Staff limitations, along with the damage caused by photocopying to the holdings entrusted to us, prevent us from providing unlimited photocopying. This means that even for items from which you cannot take notes, we may not be able to provide all of the photocopies you wish. Therefore, please **plan ahead and try to "ration" your photocopy requests** to ensure you obtain copies of the documents you really need.
- Photocopy orders are payable in advance.
- **Receipt of photocopies does not convey copyright.** It is the researcher's responsibility to insure compliance with all relevant copyright laws.

Photography Policy

- Special Collections also provides photographic services in various formats, including prints, negatives, slides, and transparencies.
- Special photographic services, such as selenium or brown toned archival prints, image enhancement, or rush orders, are available for an extra fee.
- Turnaround is usually a week to two weeks, depending on the schedule of our photographer. If your order is placed before Tuesday, it will often be available by the Wednesday of the following week.
- Photography orders are payable in advance. A price list is available.
- **Receipt of photographs does not convey copyright.** It is the researcher's responsibility to insure compliance with all relevant copyright laws.

Websites

Bayou State Periodical Index – <http://www.libris.ca/cgi23/go.exe>

An index to LA popular periodicals, sponsored by the Louisiana Library Association

New Orleans Bee Home –

<http://www.jefferson.lib.la.us/genealogy/NewOrleansBeeMain.htm>

Dual-language newspaper founded in 1827 – *The New Orleans Bee/ L'Abeille de la Nouvelle-Orléans*

Archive of issues from September 1827 to December 1923

Part of Jefferson Parish Library (4747 W. Napoleon Ave, Metairie)

Radio-Locator – <http://www.radio-locator.com/?xyz=2>

The most comprehensive radio station search engine, search by city

Louisiana Newspaper Project: WebIndex –

<http://www.lib.lsu.edu/special/lnp/webindex.html>

Part of LSU's Hill Memorial Library

Chronological index of more than 1,700 newspapers, extant and currently published

New Orleans Regional Transit Authority (NORTA) –

<http://www.norta.com/>

Schedules and fares for all bus and streetcar routes

Say What? The Language of New Orleans –

<http://www.experienceneworleans.com/glossary.html>

<http://www.neworleansrestaurants.com/glossary.html>

Lists of cultural terms frequently used in or in context to the city

New Orleans Public Library's Suggested Links –

<http://nutrias.org/~nopl/links/links.htm>

Includes links to several helpful cultural New Orleans resources



Carolyn Heneghan
chenegha@tulane.edu
504.473.5182